

PARTNER ORGANISATIONS:

MSK:

WWW.MSK.LODZ.PL

ART+INN

WWW.ART-INN.ORG



WWW.BPA.EDU.RS



Laterna
Magica

WWW.LATERNA.HU

NEWSLETTER

2023 September



MERCURY

**draMa thERapy to inCrease the
entrepreneURial potential of Youth**

The **MERCURY** project combines post-traumatic growth theory, drama therapy, and digital tools to empower youth workers in Poland, Lithuania, Hungary, and Serbia.

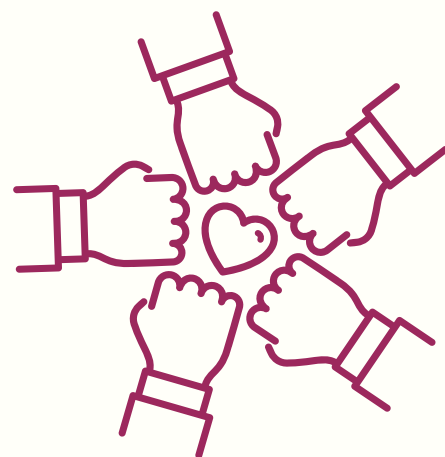
BACKGROUND

Amidst recent challenges – from the pandemic to conflict and economic turmoil – the youth bear hidden traumas, hindered by barriers like financial constraints and limited support. This silent struggle carries heavy societal costs. Despite entrepreneurship programs, young individuals with potential often remain immobilized by psychological barriers, hindering their journey from idea to action.



KICK-OFF MEETING

On 18-19 April 2023, the MERCURY project team met for their first meeting in Łódź, Poland. The primary focus of the meeting was to engage in comprehensive discussions encompassing project administration, efficient management strategies, thematic inquiries, and the formulation of targeted work plans. The meeting involved 6 representatives from partner organisations: Miejska Strefa Kultury w Łodzi (Poland), ART+INN (Lithuania) Beogradska akademija poslovnih i umetničkih strukovnih studija (Serbia), and Laterna Magica (Hungary).



WORK PLAN

Partners have successfully initiated key dissemination activities, including the creation of the project logo, website, and social media accounts. Their primary focus will now shift towards the following work packages:

- WP2 MERCURY Methodological Guide for youth workers
- WP3 MERCURY tool-kit for young people
- WP4 Recommendations for youth workers



NEXT STEPS

WP2 will focus on creating a **Methodological Guide** for youth workers. This guide is crucial for assessing the fears and doubts that young people face when entering the job market or starting their own businesses, particularly in relation to the traumas they have experienced. By drawing from post-traumatic growth theory, drama therapy, and existing EU-level frameworks, the guide will equip youth workers with the necessary knowledge and tools to understand and address these challenges effectively.

ACTIVITIES

APRIL, 2023



Preparation

OCTOBER, 2023



**Developing the
methodological
guide**

DECEMBER, 2023



**Validating and
refining the
methodological
guide**



Follow us on:



WWW.ERASMUS-MERCURY-PROJECT.EU



[MERCURY.ERASMUS.PROJECT](https://www.instagram.com/MERCURY.ERASMUS.PROJECT)



[MERCURY PROJECT](https://www.facebook.com/MERCURYPROJECT)



[MERCURY PROJECT](https://www.linkedin.com/company/MERCURYPROJECT)

This project has been funded with support from the European Commission. This publication reflects the views only of the author, and the Commission cannot be held responsible for any use which may be made of the information contained therein.



Co-funded by
the European Union

Project number: 2022-2-PL01-KA220 -YOU-000096791